

# Central Coast Beekeepers – Feb 2, 2024

## Packages & Nucs



# Packages & Nucs



- Preparation
- Installation
- Feeding
- Treatment options
- Then what?



Before Bees Arrive



**PLAN**



**AHEAD**

Location, Location, Location

Applicable to your area!

Easy vehicle access

Water, nectar, pollen & propolis sources

Full sun light facing S or SE  
Bees temp sensitive

Protected



# Apiary Considerations



- Safe Area (fire / flooding prone areas)
- Regulations (side yards, # hives)
- Hive predators

- Paint uniquely
- Don't set up in rows
- Hive stands



# The Usual Suspects



I shot the sheriff but I did not shoot the deputy.



# When Bees Arrive

Dead bees on bottom of cage?

Bees should not be wet.

(overheating during transit)

Place in cool, darkened place.

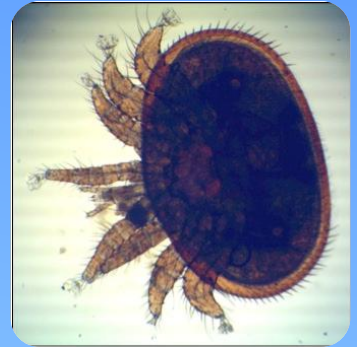
Mist with H<sub>2</sub>O – they will be thirsty.

Perfect time to treat for phoretic mites!



# Varroa Destructor

Greatest threat to honey bees, honey production & pollination services



- Every colony in N America (except Australia & Antarctica)
- Population doubles ~once a month
- Robbing, drifting & absconding
- w/o treatment colony will fail = mite bomb

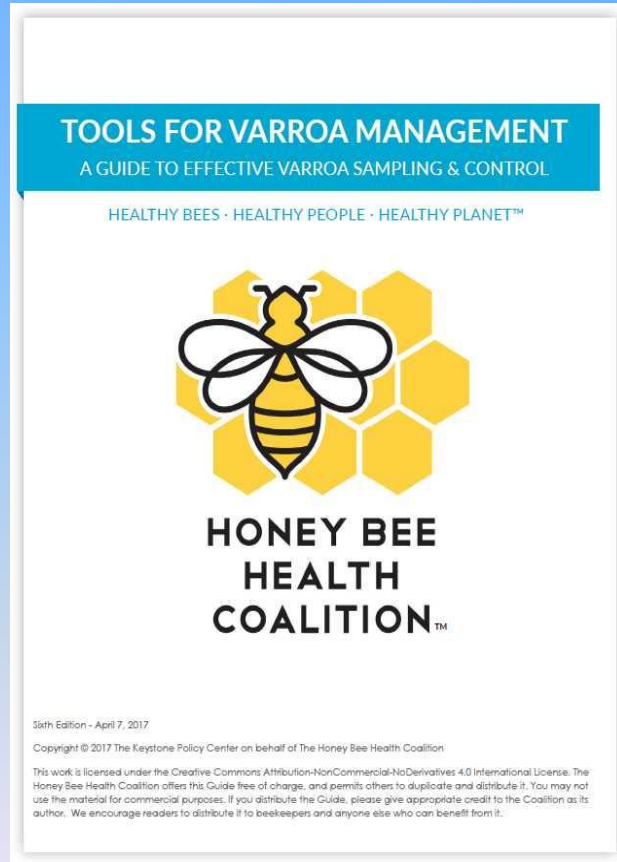
bees in failing hives -> hives 2 miles away  
viral spill over to wild bees

- Be proactive & responsible





<https://honeybeehealthcoalition.org/varroa/>





Will Varroa kill my bees?



IPM



Sampling Methods



Essential oils



Apivar



Apistan or Checkmite+



Formic acid



HopGuard



Oxalic Acid



Sanitation, screen bottoms



Drone brood removal




Requeening


<https://honeybeehealthcoalition.org/varroatool/>

Varroa Management Decision Tool

[Click here for resources](#)



HONEY BEE  
HEALTH  
COALITION



# Varroa Management Decision Tool

[GET STARTED](#)

<https://honeybeehealthcoalition.org/wp-content/uploads/2024/01/HBHC-Honey-Bee-Nutrition-Supplemental-Feeding-Guide-002.pdf/>



**BEST MANAGEMENT PRACTICES FOR HIVE HEALTH**  
A GUIDE FOR BEEKEEPERS

HEALTHY BEES · HEALTHY PEOPLE · HEALTHY PLANET™



**HONEY BEE  
HEALTH  
COALITION™**

First Edition - January 1, 2019

Copyright © 2019 The Keystone Policy Center on behalf of the Honey Bee Health Coalition

This work is licensed under the Creative Commons Attribution-NonCommercial-NoDerivatives 4.0 International License. The Honey Bee Health Coalition offers this Guide free of charge, and permits others to duplicate and distribute it. You may not use the material for commercial purposes. If you distribute the Guide, please give appropriate credit to the Coalition as its author. We encourage readers to distribute it to beekeepers and anyone else who can benefit from it.

# Package Creation



# Feeder Can & Qn Cage

If bees agitated spray w/light sugar syrup

No need to smoke bees!

Pull syrup can out

Remove queen cage

Make sure queen is alive

Cover with cardboard, wood or tile



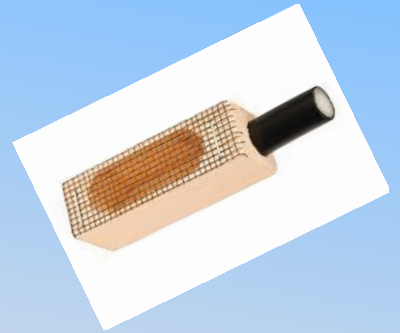
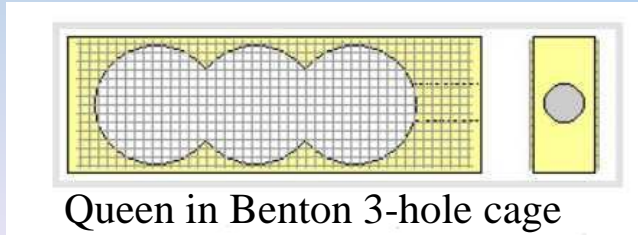
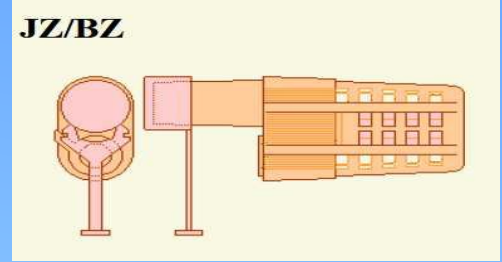
If bees on cage mellow qn accepted

If biting cage not accepted

# Queen Cages

May contain a different queen cage

- Remove cap or cork
- Install gummy bear or marshmallow
- Some use masking tape for longer release
- Push nail thru qn candy for faster release



CA mini queen cages



# Pour the Bees ( Thump & Dump )

- Remove 4-5 frames from deep
- Place QN cage in hive w/screen facing out & candy plug up if attendants
- Pour small amount on QN
- Pour rest where frames removed
- Gently replace frames w/o harming bees



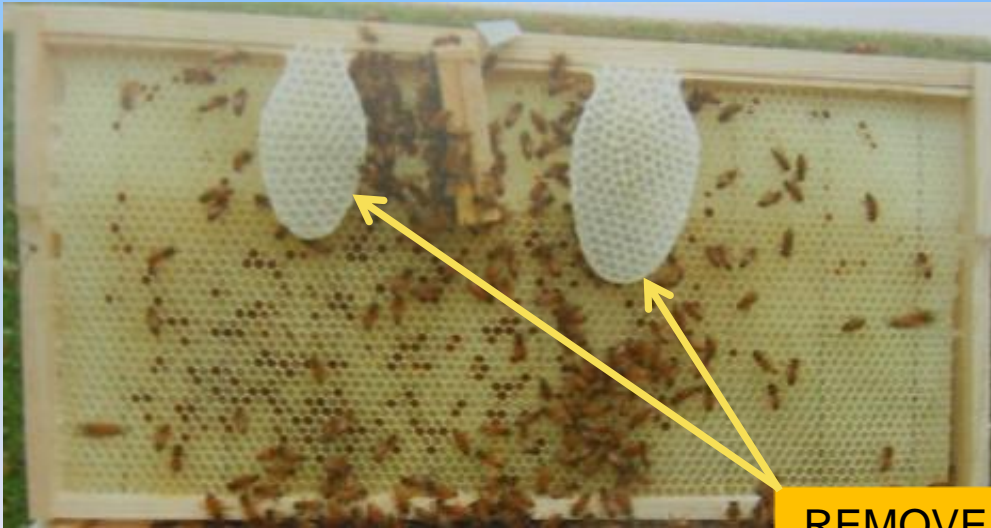
# And finally

- Install inner cover
- Install feeder & empty deep
- Narrow entrance
- Place cage in front of hive



# Let Bees Establish

- Resist the urge to over-examine
- Remove QN cage after 7-10 days
- Don't disturb for 2 weeks



**REMOVE  
when QN  
cage removed**

## Nuc Installation







Place on hive stand & remove entrance plug

Next day (if wx permits):

- Set nuc aside & place new deep on stand
- Lightly smoke
- Install brood frames (~3 frms) in exact order as nuc + foundation
- Note: queen, brood, brood pattern, eggs?
- Install inner cover, feeder, deep & outer cover
- Place nuc box in front of hive w/lid off
- Leave ~2 weeks



# Feeders

Boardman	Inverted Bucket/Jar		Empty Super/ inner cover	Inside Feeder/Division Board	Hive Top
					
<p>Pros:</p> <ul style="list-style-type: none"> <li>✓ Convenient to use</li> <li>✓ Do not have to open</li> <li>✓ Syrup level visible</li> <li>✓ Access easy because external to hive</li> </ul>	<p>Pros:</p> <ul style="list-style-type: none"> <li>✓ Convenient to use</li> <li>✓ Do not have to open hive when re-filling</li> <li>✓ Syrup level visible in strong light</li> <li>✓ Proximity to cluster</li> <li>✓ Feeding port engineered so syrup does not drip when feeding</li> </ul>	<p>Pros:</p> <ul style="list-style-type: none"> <li>✓ Convenient to use</li> <li>✓ Do not have to open hive to re-fill</li> <li>✓ Syrup level easily seen</li> <li>✓ Proximity to cluster</li> <li>✓ No propolised feeding port</li> <li>✓ Less expensive than bucket</li> </ul>	<p>Pros:</p> <ul style="list-style-type: none"> <li>✓ Convenient to use</li> <li>✓ Used for dry feeding</li> <li>✓ Minimum disturbance: only have to open cover</li> <li>✓ Used in cold or wet weather when dry feeding is only option</li> <li>✓ Proximity to cluster</li> </ul>	<p>Pros:</p> <ul style="list-style-type: none"> <li>✓ Proximity to brood nest</li> <li>✓ Bees have access to feeder</li> </ul>	<p>Pros:</p> <ul style="list-style-type: none"> <li>✓ Convenient to use</li> <li>✓ Minimum disturbance</li> <li>✓ Only have to open cover</li> </ul>
<p>Cons:</p> <ul style="list-style-type: none"> <li>✓ Encourages robbing</li> <li>✓ Attracts ants</li> <li>✓ External so weather dependent for bees</li> </ul>	<p>Cons:</p> <ul style="list-style-type: none"> <li>✓ Expanding air can force syrup out</li> <li>✓ Feeding port loosens over time</li> <li>✓ Requires empty super &amp; inner cover to block light</li> <li>✓ If not all syrup taken up, may ferment or spoil</li> </ul>	<p>Cons:</p> <ul style="list-style-type: none"> <li>✓ Requires empty super &amp; inner cover to block light</li> </ul>	<p>Cons:</p> <ul style="list-style-type: none"> <li>✓ No cons</li> </ul>	<p>Cons:</p> <ul style="list-style-type: none"> <li>✓ Takes up room in brood area</li> <li>✓ Have to open the hive to re-fill</li> <li>✓ Older models drown bees</li> <li>✓ Bees may not leave cluster to feed</li> </ul>	<p>Cons:</p> <ul style="list-style-type: none"> <li>✓ Bees have to break cluster to feed</li> <li>✓ If not all syrup taken up, may ferment or spoil</li> </ul>

# Baggie Feeder

- Convenient
- Syrup level visible
- Drowns few bees
- Really cheap



- Low capacity
- Might need spacer

<https://honeybeesuite.com/how-to-tame-a-baggie-feeder/>

# Jar Feeder

- Convenient w/o opening hive
- Syrup level visible
- “Natural” dispensing time
- Inexpensive



- Requires empty super
- Low capacity

# Boardman Feeder

- Don't use externally !!!!
- Convenient w/o opening hive
- Syrup level visible
- “Natural” dispensing time



- Requires empty super
- Low capacity



# Bucket Feeders



- Convenient w/o opening hive
- Syrup level visible
- “Natural” dispensing time



- Small storage footprint
- Can carry 4 at a time in each hand



- Requires empty super

# Division Board Feeder

- Close to brood nest
- Access within hive
- Takes up room in hive
- Must open hive to refill
- Bees have to leave cluster to feed
- Some drowning



# Hive Top Feeders

- Convenient
- Disturbance minimal
- High capacity
- Leave cluster
- May create “welfare bees”
- May become “syrup bound”
- Too much syrup may mold, ferment, spoil
- Hard to carry when full
- Drowned bees



# WHAT TO LOOK FOR DURING 1<sup>ST</sup> TWO WEEKS

## External Hive Check

- Undertaker bees removing dead bees
- Guard bees at entrance
- Orientation flights
- Forager bees bringing in pollen
- HVAC bees fanning & scenting w/nasonov gland
- Bee beard



# 1<sup>st</sup> Inspection

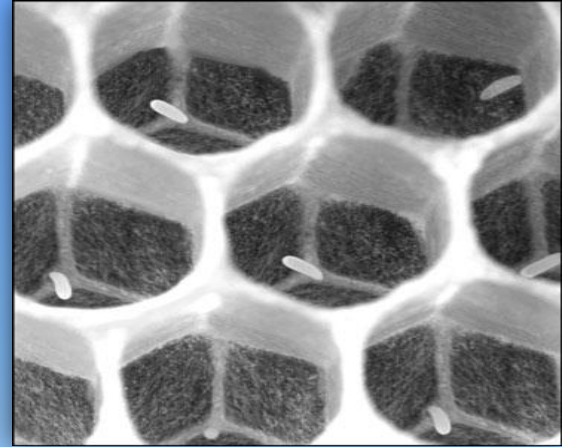
> 2 weeks (temp > 70 deg)

- Smoke, wait a few mins
- In/Out < 15 mins
- Hold frames over hive
- #3 frame most indicative
- Super - 70% rule



# WHAT YOU SHOULD SEE

- Drawn comb
- Laying queen
- Compact brood pattern
- Honey & pollen stores



Listen to your asparagus.  
It will tell you how to eat it.



Most importantly - Listen to your bees!!



Procrastination is not your friend.

Don't be paralyzed with hope or suffer under the tyranny of optimism!



# Key to Success Bee Happy!

- Understand bees, pests & diseases
  - Join clubs
  - Attend classes
  - Find a mentor
  - Read, read, read
- Treat / Medicate
  - Know what to look for
  - When to look for it
  - What to do about it
- Inspections (~ every 2 weeks)
  - Choose your days
  - Know bee temperament
  - Handle drones for practice
- Monitor & document – be observant



# The End

And The Journey Beegins!